

Rohan City - A1

Prague 8 Karlín, Rohanské nábřeží



The office building **Rohan City - A1** is in Prague 8 – Karlín. Its fascinating appearance was designed by the world-famous architect Eva Jiřičná, which is a guarantee of its unusualness and quality. Thanks to its well-thought-out design, it enables efficient and flexible use of space and economical operation. The building offers 8 above-ground and 1 underground floors, where you will find modern class A office spaces with high quality and ergonomic layout. In addition, you can look forward to a spectacular shared roof terrace with a breathtaking view of Prague. The building will be located on the future corner of Rohanské nábřeží and Invalidovna Park, which will be extended to the Vltava as part of the project.

Currently available office space (available from 06/2024):

ground floor, commercial premises 264 sqm

ground floor, restaurant 269 sqm

1st floor, offices 1,015 sqm + terraces 156 sqm

2nd floor, offices 1,377 sqm

3rd floor, offices 1,377 sqm

4th floor, offices 1,377 sqm

5th floor, offices 1,125 sqm + terraces 210 sqm

6th floor, offices 1,172 sqm

7th floor, offices 1,126 sqm + terraces 39 sqm (reservation)

Rental price:

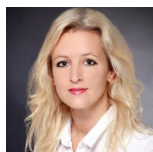
Offices 17.20 - 17.60 EUR/sqm/month

Services 90 CZK/sqm/month + energy consumption

Parking 100 EUR/space/month

Add-on factor 4.5

Kontakty pro zájemce o pronájem prostor:



Magda Hamerníková
+420 739 396 199
magda@pragueoffices.com

Rohan City - A1

Prague 8 Karlín, Rohanské nábřeží

Fotopříloha:

