

DOCK IN FIVE

Prague 8 Libeň, Smrčková ul.



DOCK IN FIVE is a modern and elegant administrative building located around the former Libeň docks, which are gradually being revitalized and developed. The building, designed according to the latest architectural trends, offers modern office space with a view of the banks of the two blind branches of the Vltava in the Karlín and Libeň areas. The location not only offers workspaces close to the city center, but also allows relaxation by the river, ideal for coping with a busy day at work.

Good transport accessibility is another advantage of this building. Metro line B is only a 4-minute walk away, and tram stops are just 2 minutes away. The building is also well connected to the main roads and close to the Blanka tunnel. Near the administrative building, there is a popular Vltava cycle path that will take you along the river to Troja and beyond the city. The entire area is also being revitalized not only by the construction of administrative buildings, but also by residential buildings, which underlines its modern character.

Currently available office space:

1st floor, offices 307 sqm

3rd floor, offices 1,380 sqm + terrace 26 sqm

5th floor, offices 356 sqm

DOCK IN ONE offices for rent

DOCK IN TWO offices for rent

DOCK IN THREE offices for rent

DOCK IN FOUR offices for rent

Rental price:

Offices from 16.50 EUR/sqm/month

Commercial space 16.50 – 17.50 EUR/sqm/month

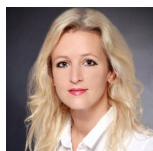
Services 130 CZK/sqm/month + electricity

Terraces 7 EUR/sqm/month

Parking 130 EUR/space/month (parking ratio 1:100)

Add-on factor 6.2

Kontakty pro zájemce o pronájem prostor:



Magda Hamerníková

+420 739 396 199

magda@pragueoffices.com

DOCK IN FIVE

Prague 8 Libeň, Smrčkova ul.

Fotopříloha:

