

Trimaran

Prague 4 Pankrác, Na Strži 63



Trimaran is a unique administrative building in the shape of the letter E, which consists of three wings connected by a transverse tract. It is located in the immediate vicinity of the Pankrác metro station and offers more than 18,000 sqm of modern office space on a plot of land of 6,290 sqm.

Trimaran is immediately followed by the City Element office project. The buildings have received LEED Gold certification.

Currently available office space:

2nd floor, offices 678 sqm

2nd floor, offices 911 sqm

3rd floor, offices 2 295 sqm

Rental price:

Offices 16.50 – 18.50 EUR/sqm/month

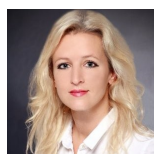
Terraces 5 EUR/sqm/month

Services 170 CZK/sqm/month + tenant's electricity

Parking 130-150 EUR/space/month (parking ratio 1/100 sqm)

Add-on factor 6.329

Kontakty pro zájemce o pronájem prostor:



Magda Hamerníková

+420 739 396 199

magda@pragueoffices.com

Trimaran

Prague 4 Pankrác, Na Strži 63

Fotopříloha:

