

Greenline Kačerov

Prague 4, Jihlavská 21



The Greenline Kačerov office building in Prague 4 offers modern and spacious spaces with plenty of natural light and breathtaking views of Prague. Consisting of four underground and seven above-ground floors, the building has four main cores and a central reception, allowing easy and convenient access to the individual floors. On the last two floors you will find green terraces with a view of the surrounding city. In addition to conference spaces and relaxation areas, there is also a cafe on the ground floor of the building. Green Line Kačerov has advanced technologies for management, operation and access, and is also LEED Gold certified. The entire complex is fully air-conditioned, with built-in fan coils and double floors for your comfort. The building also has a separate visitor lift from the garages directly to the reception, and a separate reception can be set up on the north side for more privacy.

Currently available office space:

3rd floor, offices 367 sqm

3rd floor, offices 902 sqm (available from 04/2025)

5th floor, offices 1,160 sqm

6th floor, offices 1,980 sqm + terrace

Rental price:

Offices 15.50 – 16.50 EUR/sqm/month

Services 95 CZK/sqm/month + media consumption

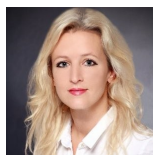
Add-on factor 5%

Parking 110 EUR/space/month

Parking of electric and hybrid vehicles 120 EUR/place/month (plus electricity consumption)

Parking ratio 1:6

Kontakty pro zájemce o pronájem prostor:



Magda Hamerníková
+420 739 396 199
magda@pragueoffices.com

Greenline Kačerov

Prague 4, Jihlavská 21

Fotopříloha:

