

## BB Centrum Building B

Prague 4 Michle, Vyskočilova 1422/1a



**Office Building B in BB Centrum**, built in 1999 by the architectural firm Aulík Fišer architekti, is a great example of modern architecture. With 8 above-ground and 3 underground floors and an ideal location on the main avenue Vyskočilova in the center of BB Centra, building B offers its tenants the perfect location for their business. It is currently undergoing a complete renovation to ensure the highest quality premises. Tenants will have access to a beautiful green roof terrace with a water feature that will be available directly in the building.

The location of Prague 4 - Michle, where building B is located, offers a wide range of options for sports, relaxation, shopping, and other services. The excellent location of building B, near the Prague main road / D1 highway and within reach of the City Ring Road, allows easy and quick access to the city center and most other large cities. Flexibility and user friendliness are ensured not only in building B, but also in the other buildings of the BB Center.

### Currently available office space:

The building currently does not offer any spaces for rent. Contact us for more information.

Other offices of the BB Centrum Prague 4 complex

### Rental price:

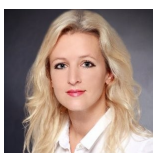
Offices 15.5 - 16 EUR/sqm/month

Parking 110 EUR/space/month

Services 80 CZK/sqm/month + direct energy consumption

Add-on factor 7

### Kontakty pro zájemce o pronájem prostor:



Magda Hamerníková  
+420 739 396 199  
magda@pragueoffices.com

## **BB Centrum Building B**

Prague 4 Michle, Vyskočilova 1422/1a

**Fotopříloha:**

