

BB Centrum Building G

Prague 4 Michle, Michelská 58



BB Centrum Building G is a modern administrative complex located in the attractive northeastern part of Brumlovka, between Michelská and Baarova streets. With a total area of 5,500 sqm on four above-ground floors and 1,014 sqm on the ground floor, it offers plenty of office and retail space. Considering the different needs and sizes of companies, smaller office units with an area of 200-500 sqm and commercial spaces from 100 sqm are also available.

The building has 148 parking spaces in three underground floors, which ensures convenient parking for tenants and guests. Building G has an energy label B and green building certification according to BREEAM, which guarantees efficient use of energy and reduced impact on the environment.

Thanks to its strategic location near the main traffic artery D1 and the inner Prague Ring Road, the building is easily accessible by car. For public transport, the "Na Rolích" bus stop is provided in front of building G, and the Budějovická and Kačerov metro stations are just two bus stops away.

Currently available office space:

2nd floor, offices 1,055 sqm

Other offices of the BB Centrum Prague 4 complex

Rental price:

Offices 15.50 EUR/sqm/month

Retail 15 EUR/sqm/month

Parking 100 EUR/space/month

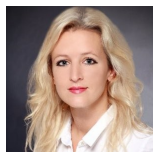
Estimation of operating costs

Offices 110 CZK/sqm/month

Media consumption 30 CZK/sqm/month

Parking 230 CZK/space/mont

Kontakty pro zájemce o pronájem prostor:



Magda Hamerníková
+420 739 396 199
magda@pragueoffices.com

BB Centrum Building G

Prague 4 Michle, Michelská 58

Fotopříloha:

