

Vinice

Prague 10 Strašnice, Vinohradská 167



The Vinice administrative building is a modern business-administrative building with a high technical and qualitative standard. Thanks to its innovative design, the office space can be fully adapted to the needs of each tenant, whether it is an open space or separate independent offices. This makes it possible to fully respect the company culture and work style of the tenants.

There are plenty of above-standard sized parking spaces in the building and complete facilities are available for cyclists. In addition, archive and storage spaces are available to satisfy even the most demanding needs. On the ground floor of the building there is a supermarket, a pizzeria and a cafe, which is a great asset for all tenants who can easily shop or relax here.

The new exterior environment of the building contributes to the creation of a pleasant working environment for tenants and increases the aesthetic value of the building. All these elements together form a functional and modern administrative building that will fully meet the expectations of demanding tenants.

Currently available office space:

6th floor, offices 297 sqm (including new fit-out as per plan 1, ready for move-in) - video 1

7th floor, offices 223 sqm (including new fit-out as per plan 2, will be ready for move-in from 06/2024)

8th floor, offices 924 sqm (currently in Shell & Core condition, customization according to the tenant's requirements)

Virtual tour of pre-prepared offices here

Rental price

Offices from 360,- CZK/sqm/month

Parking 2,140,- CZK/space/month

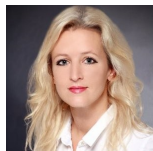
Storage 195,- CZK/sqm/month

Services:

Offices 120,- CZK/sqm/month

Parking 250,- CZK/space/month

Kontakty pro zájemce o pronájem prostor:



Magda Hamerníková

+420 739 396 199

magda@pragueoffices.com

Vinice

Prague 10 Strašnice, Vinohradská 167

Fotopříloha:

